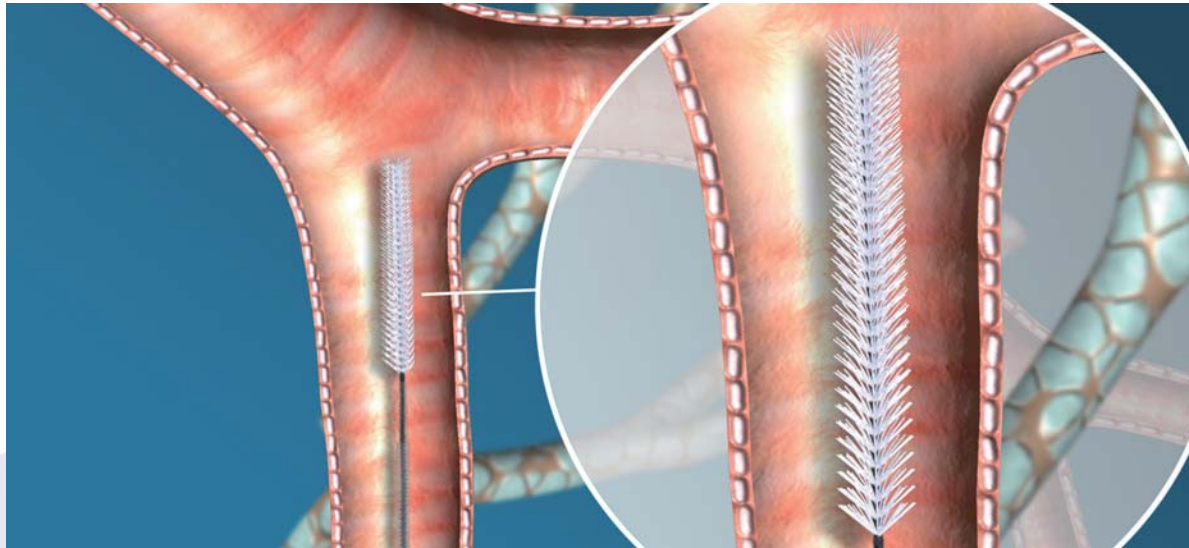


# Cytology Brush



## Your ideal choice for sampling

Micro-Tech has a full line of Cytology Brush for your lab's sampling. Choose the ideal Cytology Brush for your facility needs.

- Excellent price-performance-ratio
- Ergonomic handle
- Good sampling feature and perfect handling
- Extensive product range available



## Coding Rule of IOC

### Note

IOC stands for International Ordering Code

**CYB** - **XX** **X** - **XX** **X**  
(1) (2) (3) (4) (5)

### Explanation:

- (1) Part **CYB/(1)** stands for Cytology Brush
- (2) Part **XX/(2)** stands for brush diameter (Unit: 0.1mm)
- (3) Part **X/(3)** stands for brush shape  
U: U-type  
S: Straight
- (4) Part **XX/(4)** stands for working length (Unit: 100mm)
- (5) Part **X/(5)** stands for sheath  
A: without sheath  
B: with sheath

### For example:

CYB-40S-12B refers to Cytology Brush with sheath, straight shape, the brush diameter is 4.0mm, and the working length is 1200mm.

## Specification

IOC*	EOC*	Brush Dia. (mm)	Brush Shape	Working Length (mm)	Sheath
CYB-40U-16B	-----*	4	U-type	1600	Yes
CYB-48U-16B	-----	4.8	U-type	1600	Yes
CYB-24S-16B	-----	2.4	Straight	1600	Yes
CYB-40S-16B	-----	4	Straight	1600	Yes
CYB-24S-23A	-----	2.4	Straight	2300	No
CYB-40S-23A	-----	4	Straight	2300	No
CYB-50S-23A	-----	5	Straight	2300	No
CYB-60S-23A	-----	6	Straight	2300	No

.....

If what you expect is not included above, please refer to range available as follows:

Brush Dia.: 2.4mm, 4mm, 4.8mm, 5mm, 6mm

Working Length: 1200mm, 1600mm, 2300mm

### Note

IOC\*: Stand for International Ordering Code

EOC\*: Stand for European Ordering Code.

-----\*: Stand for EOC is the same as IOC.

