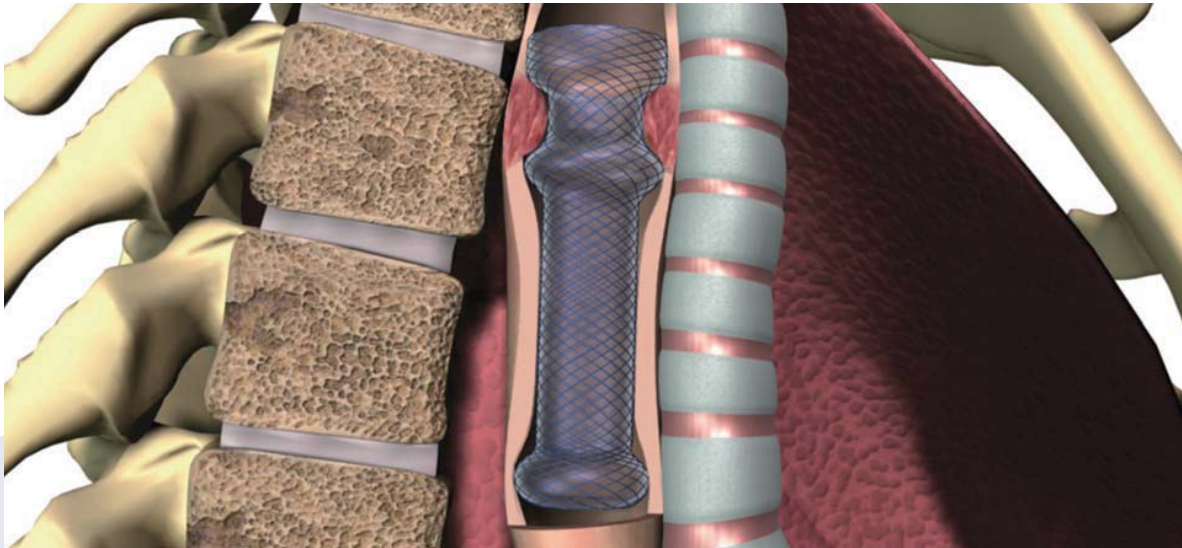


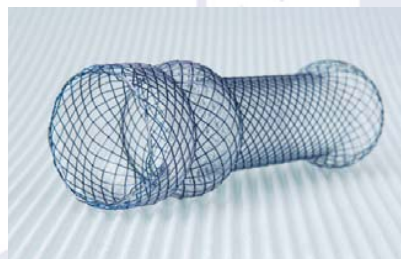
## Fistula-occluding Esophageal Stent



### Perfectly effective to occlude the fistula

The fully covered design can occlude the esophageal fistula effectively. And the spherical part in the middle of the stent can prevent side leakage effectively.

- Made of single Nitinol wire with the “thermal memory effect” allowing the stent to expand to its preset shape after released
- Mesh structure and atraumatic ends to reduce irritations to the patient
- Strong radial force and anatomy-fit spherical part in the middle helping to avoid migration
- Resistant and elastic covering to avoid restenosis
- Radiopaque marks for easy orientation and exact implantation under X-ray
- Customized anti-reflux design available



## Specification

IOC*	EOC*	Body Dia. (mm)	Flange Dia. (mm)	Length (mm)	Covering (mm)
<b>Stents with end-to-end covering</b>					
ST01-994.14.070	-----*	14	20	70	70
ST01-994.16.080	-----	16	22	80	80
ST01-994.18.090	-----	18	24	90	90
ST01-994.20.100	-----	20	26	100	100
ST01-994.22.110	-----	22	28	110	110
ST01-994.24.120	-----	24	30	120	120
.....					

For more specifications, please refer to CE range list of Esophageal stent. (See Page 11).

### Note

IOC\*: Stand for International Ordering Code.

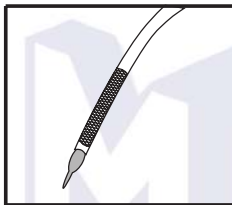
EOC\*: Stand for European Ordering Code.

-----\*: Stand for EOC is the same as IOC.

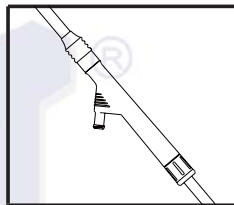
## Delivery System

Ref	Dia. (mm)	Length (mm)	Guide Wire
OTW (Over the wire) System	8, 8.5, 9	700	0.035"

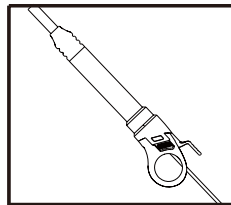
## OTW (Over the wire) System



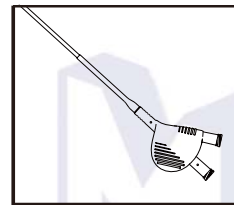
Olive tip



Front handle



Loop assembly



Balloon handle